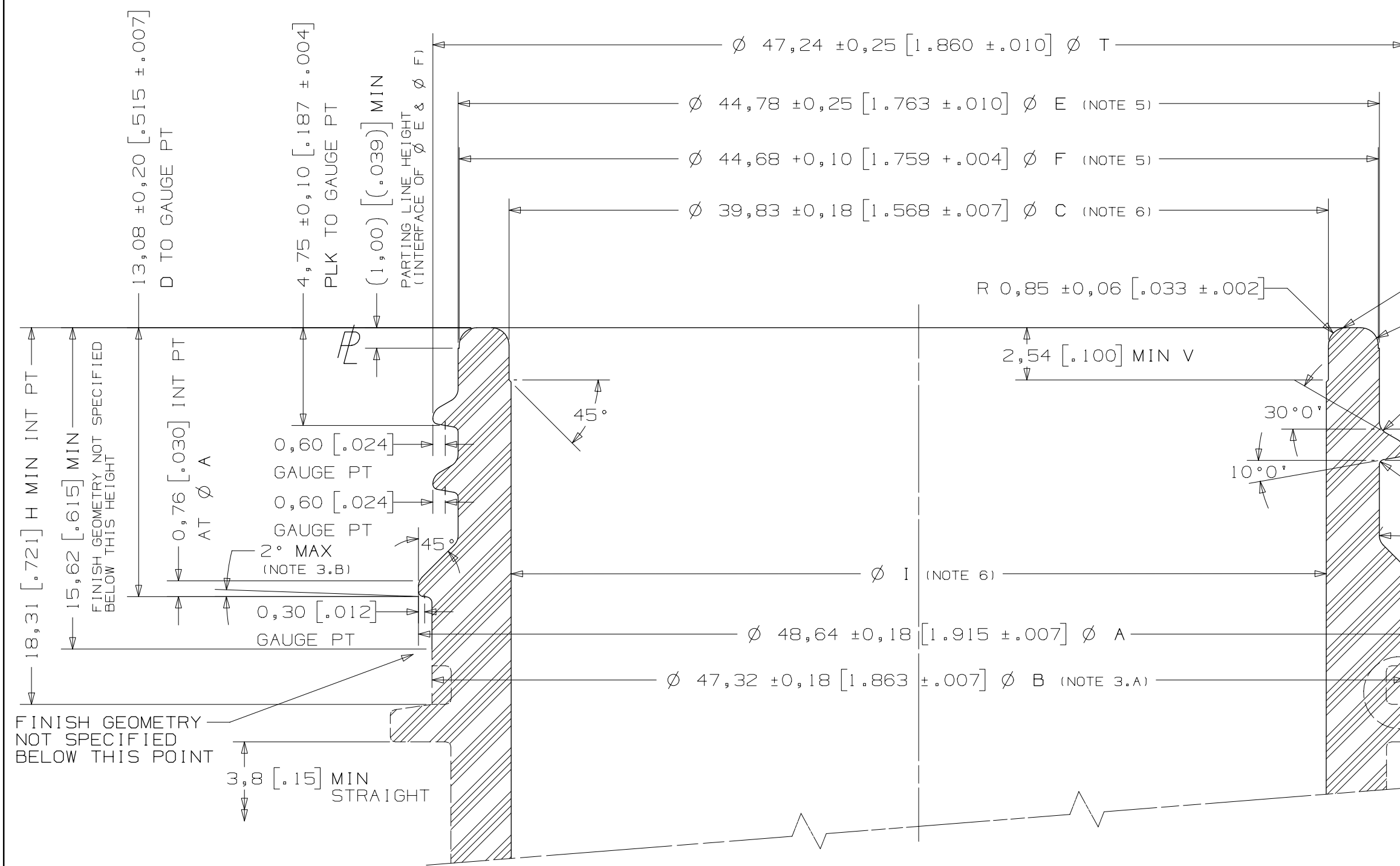
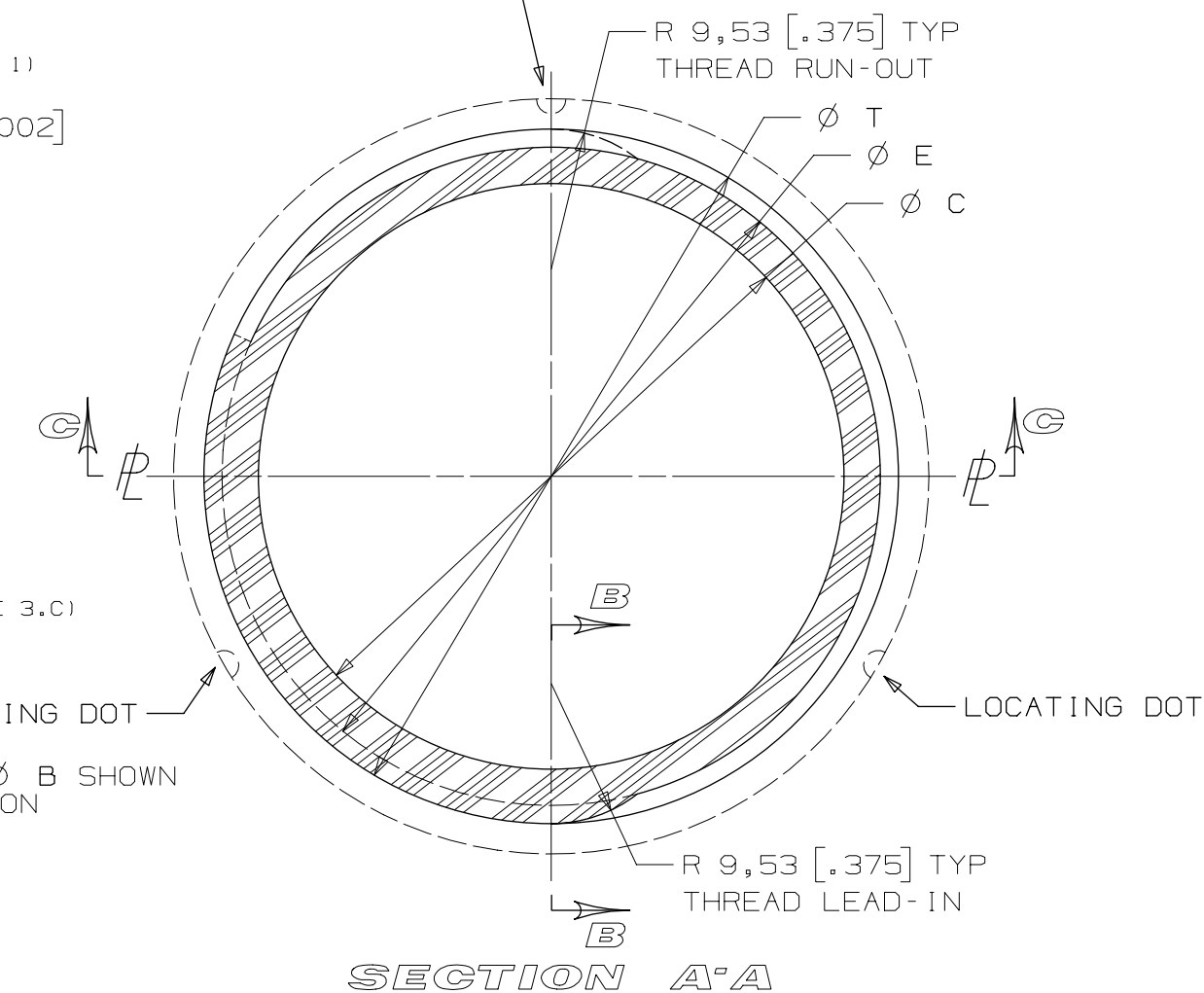


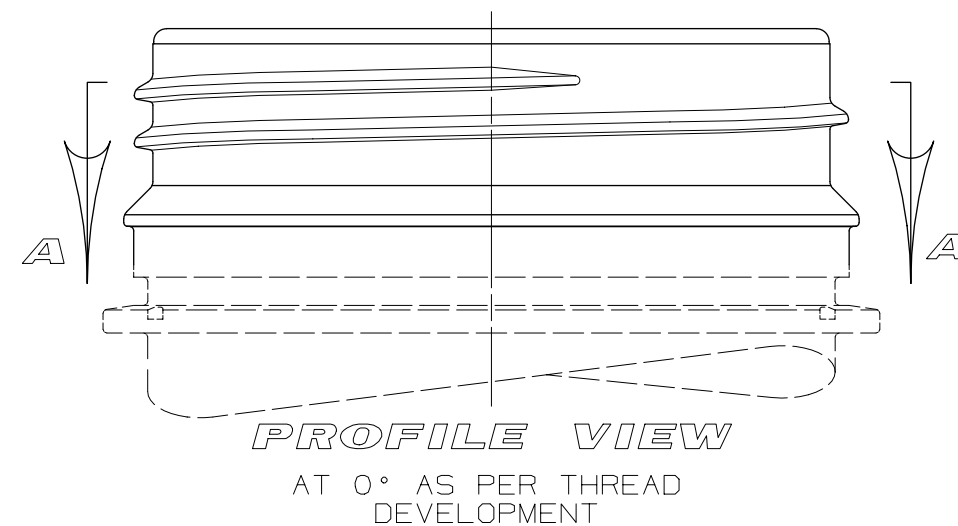
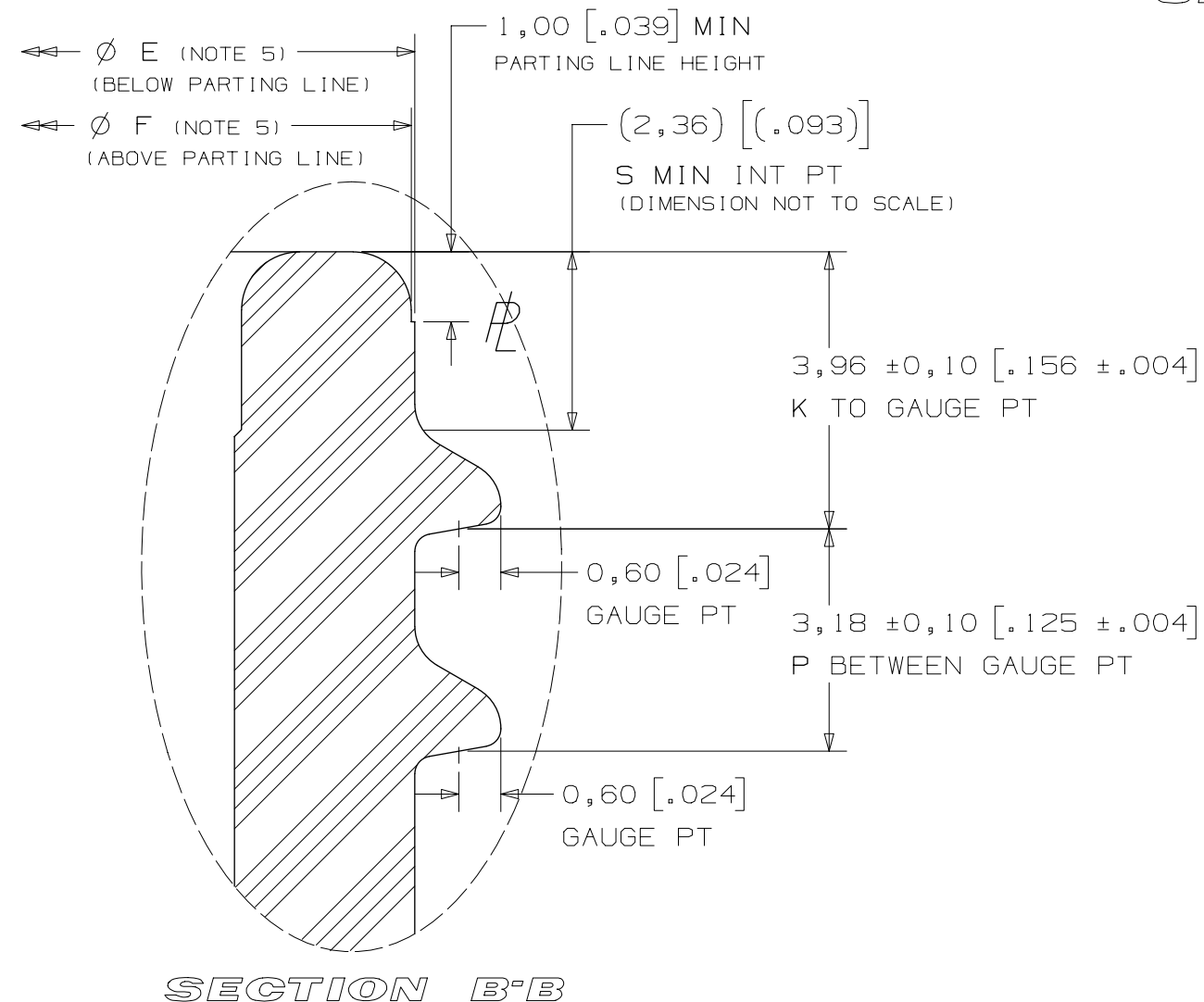
FINISH REV	DATE	DESCRIPTION	BY
000	97/08/01	ORIGINAL ISBT-HFSC SPEC.	SYK/LK
001	2000/01/17	SPECIFICATION CONVERTED TO STANDARDIZED FORMAT	SYK



LOCATING DOTS (3) REQUIRED 120° APART ON SUPPORT LEDGE - IN LINE WITH LIMIT OF FULL THREAD DEPTH (OPTIONAL LOCATING DOT DESIGNS ACCEPTABLE)



SECTION C-C

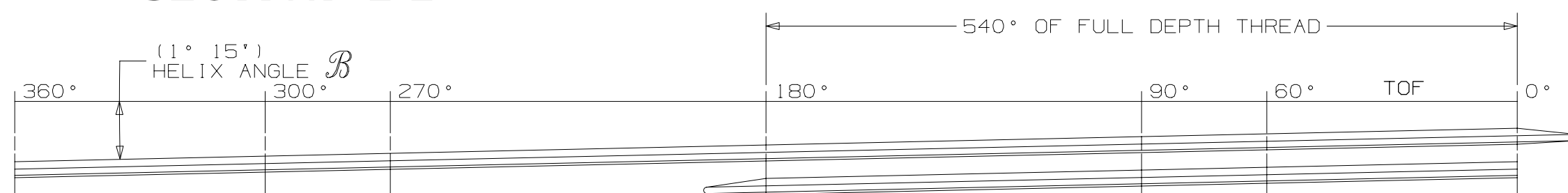


NOTES

- THIS IS A TOP SEAL FINISH. TOP SURFACE TO BE FLAT AND FREE OF SINKS.
- REQUIREMENTS FOR GOOD CLOSURE APPLICATION
 - THREAD AND TAMPER EVIDENT BEAD SHOULD BE WELL DEFINED.
 - VARIATIONS IN ϕE ARE TO FOLLOW UNIFORMLY THOSE OF ϕT .
- REQUIREMENTS FOR PROPER TAMPER EVIDENT BAND FUNCTION REQUIRES
 - VARIATIONS IN ϕB ARE TO FOLLOW UNIFORMLY THOSE OF ϕA .
 - ANGLE TO BE AS FLAT AS POSSIBLE.
 - RADIUS TO BE AS SHARP AS POSSIBLE.
- ϕT AND ϕE DIMENSIONS ARE THE AVERAGE OF TWO MEASUREMENTS. EACH MEASUREMENT IS TAKEN APPROXIMATELY 15° FROM THE PARTING-LINE.
- NO OVERHANG ALLOWED AT ANY POINT IN 360° BETWEEN ϕE AND ϕF .
- ϕI WILL VARY BY MANUFACTURER.
- REFER TO DRAWING #1168216 FOR VOLUNTARY STANDARD PET FINISH DIMENSION NOMENCLATURE.

CONDITIONS OF USE AND LEGAL DISCLAIMER

THESE STANDARDS ARE VOLUNTARY. PRIOR TO USE, YOU SHOULD FIRST DETERMINE WHETHER THE USE OF THESE STANDARDS IS APPROPRIATE IN YOUR PARTICULAR APPLICATION. YOU, THE USER, ASSUME ALL RESPONSIBILITY FOR THE USE AND INTERPRETATION OF THESE STANDARDS. NO REPRESENTATIONS ARE MADE AS TO THE CURRENCY OF THESE STANDARDS OR THE CONFORMITY OF ANY PRODUCT TO THEM. YOU, THE USER, AGREE TO INDEMNIFY AND SAVE HARMLESS THE ISBT AND HUSKY INJECTION MOLDING SYSTEMS LTD., THEIR RESPECTIVE OFFICERS, DIRECTORS, EMPLOYEES AND AGENTS FROM ANY AND ALL LOSSES, CLAIMS, OR DAMAGES RESULTING FROM THEIR USE INCLUDING INJURY OR DEATH OF ANY PERSON OR DAMAGE TO ANY PROPERTY OF WHATSOEVER NATURE.



THREAD DEVELOPMENT
 - ONE (1) THREAD START
 - 8 TPI PER START; 3.18 (.125) TRAVEL PER TURN
 - RIGHT HAND THREAD
 - THREAD LEAD-IN/RUN-OUT PER CUTTER PROFILE

DIMENSIONS SHOWN ARE FINISHED PLASTIC SIZES		
GENERAL TOLERANCES	METRIC	[IMPERIAL]
	MILLIMETRES	[INCHES]
	X, X	± 0,3 (.XX ± 0.01)
	X, XX	± 0,13 (.XXX ± 0.005)
	X°	± 2°
	X° X'	± 0° 15'

DESCRIPTION	THIS DRAWING IS MAINTAINED BY
PCF - 48P - 2 VOLUNTARY STANDARD HOT FILL FINISH	3Plastics INJECTION MOLDING SYSTEMS LTD.
	Web: www.3plastics.com Email: sales@3plastics.com
	FINISH No PCF - 48P - 2
DWN J.SYKES DATE 2000/01/17	DRAWING No 1127627 - 1